

DUAL ULTRA

11KW HYBRID INVERTER

DUAL AC INPUT - DUAL AC OUTPUT



LIFETIME WARRANTY

- 2 Years Unlimited Parts Replacement
- Life time Free Service Warranty

*Terms & conditions apply

FEATURES

THAT NEVER SEEN BEFORE



Dual MPPT
PV Input
6KW x 2 (12KW)



Dual AC Input
Switched
Automatically



Dual AC Output 11KW
(Main Load & Smart Load)



Max PV Voltage
500VDC



MPPT Range
90~450VDC



Max PV Input
Current 27A x 2



Works with &
without battery
48V



Max Charging
Current 150A



Smart Power
Management Set
Multiple Schedule



Built-in Wifi for
Mobile Monitoring &
OTA Firmware Upgrade



Zero Export
Built-in



Net Metering
feed into Grid



Colored LCD with
Slide Operation



Power Status
LED Lighting
Indicators



Built-in (BMS)
Battery Management
System



Built-in
CT Function
(to meet self consumption
application)



Built-in
Parallel Kit
(6 Units can be parallel
in single & three phase)



USB
ON-THE-GO
Function



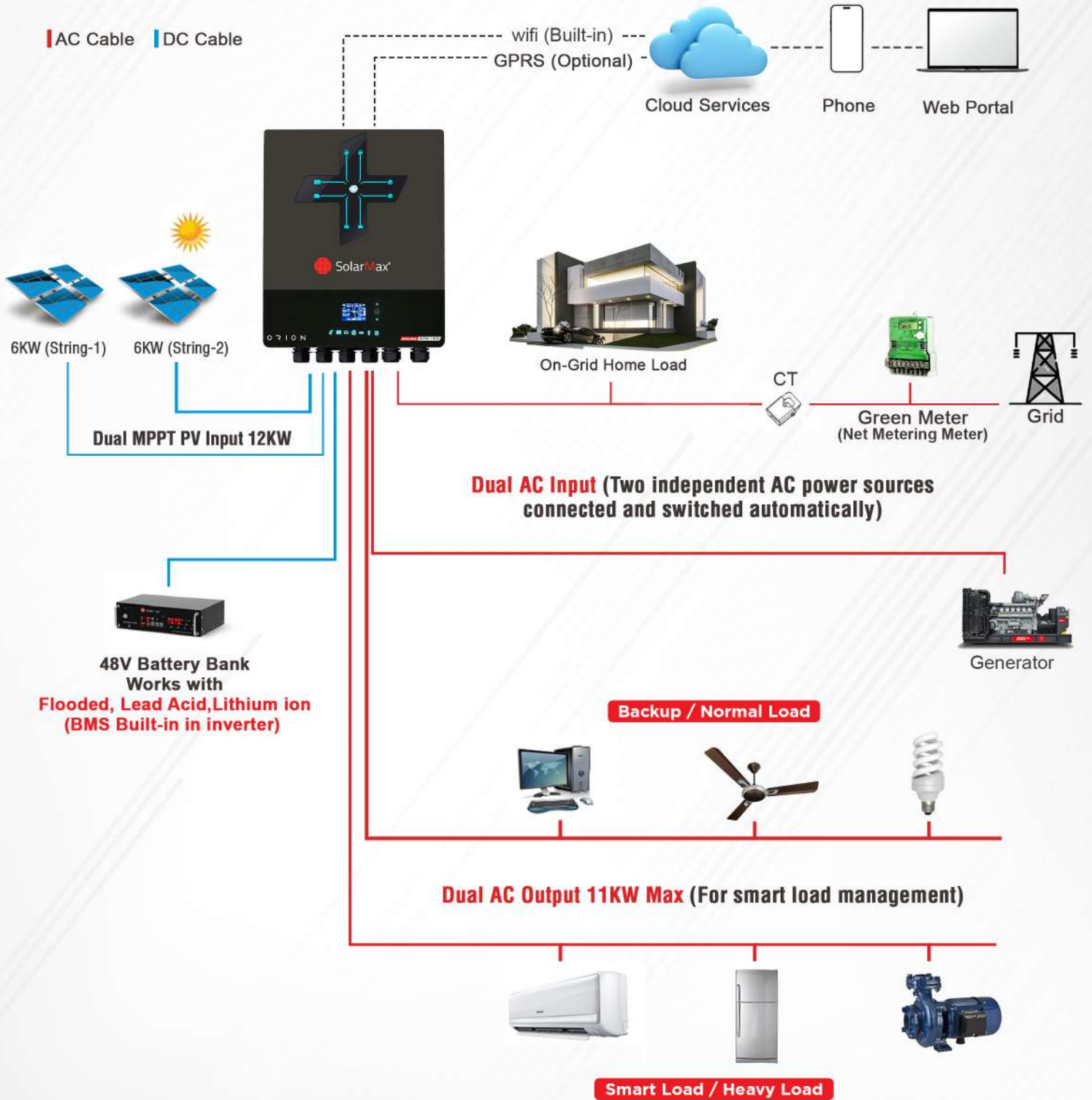
Support Optional
GFCI, Rapid Shutdown,
AFCI Detections



Smart &
Safe

DUAL AC IN & DUAL AC OUTPUT

ORION ULTRA SERIES WORKING DIAGRAM IN HYBRID MODE





- Two independent AC power sources connected and switched automatically
 - Dual outputs, for smart load management



MODEL		SM-ORION-ULTRA-11KW
Rated Inverter Power	11000VA / 11000W	
PARALLEL CAPABILITY	6 Units in Single & Three Phase	
INPUT (Utility & Generator Power)		
Voltage	230 VAC	
Selectable Voltage Range	170-280 VAC (For Computers) 90-280 VAC (For Home Appliances)	
Frequency Range	50 Hz/60 Hz (Auto sensing)	
OUTPUT		
AC Voltage Regulation (Batt. Mode)	230VAC \pm 5%	
Surge Power	22000VA	
Waveform	Pure Sine Wave	
Transfer Time	10 ms (For Personal Computers), 20 ms (For Home Appliances)	
Dual AC Output(Main & Smart Load	11000W	
BATTERY		
Battery Voltage	48 VDC	
Floating Charge Voltage	54 VDC	
Overcharge Protection	63 VDC	
SOLAR CHARGER & AC CHARGER		
Solar Charger type	MPPT	
Maximum PV Array Power	12000W (6000W x 2)	
MPPT Range @ Operating Voltage	90 ~ 450 VDC	
Maximum PV Array Open Circuit Voltage	500 VDC	
Maximum PV Input Current	27A x 2(MAX 40A)	
Maximum Solar Charge Current	150A	
Maximum AC Charge Current	150A	
Maximum Charge Current	150A	
INTERFACE		
Display	LED lighting indicators, colored LCD	
Communication Interface	Built-in USB/RS232/RS485/WiFi/Dry-contact/BTS Support optional GFCI, Rapid shutdown, AFCI detection	
External current sensor port	Yes, built-in current transformer sensor	
OPERATING ENVIRONMENT		
Humidity	5% to 95% Relative Humidity(Non-condensing)	
Operating Temperature	-10°C to 50°C	
Storage Temperature	-15°C to 60°C	
PHYSICAL		
Dimension, D X W X H (mm)	145x 438 x 553.6	
Net Weight (kgs)	18.4	